

CRAZY PAVING FACT SHEET

What is crazy paving?

Crazy Paving offers high-quality, bespoke paving solutions using irregularly shaped stones to create unique and aesthetically pleasing patterns. Ideal for driveways, patios, garden paths, alfresco and pool areas.

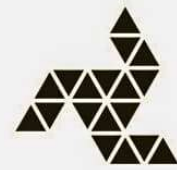
Why choose crazy paving?

- **Unique Aesthetic:** Each installation is a one-of-a-kind masterpiece, adding a touch of elegance and individuality to your outdoor space.
- **Timeless Appeal:** The natural, irregular patterns create a sophisticated look that never goes out of style.
- **Versatility:** Suitable for a variety of applications, including patios, pathways, and driveways, enhancing both modern and traditional settings.
- **Artisan Craftsmanship:** Our skilled craftsmen meticulously piece together each stone, ensuring a seamless and artful finish.
- **Enhanced Property Value:** The distinctive and luxurious appearance of crazy paving significantly boosts the curb appeal and value of your property.
- **Customization:** Choose from a wide range of stone types and colors to perfectly complement your home's exterior and landscape design.
- **Durability:** High-quality materials ensure long-lasting beauty and resilience against the elements, maintaining their charm over time.



jay@corepave.com.au

0438 445 933



CORE PAVE



CORE PAVE

Understanding Crazy Paving Laying Methods

When installing crazy paving, Core Pave's philosophy is to ensure an organic look for the most pleasing finish. To achieve this, we minimize the use of angle grinders, which offers several aesthetic benefits:

- **Natural Grout Joints:** This approach ensures grout joints have natural edges instead of sharp, cut edges.
- **Organic Lines:** Minimizing cuts allows for more organic, flowing lines.
- **Reduced Dust:** Less cutting means less dust, which is crucial since silica dust is a safety hazard.

Laying Methods: Tile Glue vs. Mortar

Depending on the installer's preference, crazy paving can be laid using tile glue or mortar. The key is ensuring the stone is properly fixed. At Core Pave, we train our staff to lay on mortar for crazy paving, as we believe this method provides the best results. Mortar accommodates variations in stone thickness, ensuring a more stable and visually appealing finish.

Laying on mortar allows for better leveling between the paving stones and can also make it easier to keep the work area clean throughout the process. When making mortar for crazy paving, it is important to use a motorized mixer; we recommend a homogeneous type mixer. The sand and cement ratio, as well as the type of sand, are also crucial.

Additionally, coating the backs of the paving stones with a specialized adhesive slurry can help seal the backs of the pavers, which is an important step in the process.

Pointing the joints or grouting

After laying the paving stones, the next step is to fill the joints with a grout mix. You can either sponge off the excess grout or smooth it with a small trowel. The grout color should complement the stone color, blending in rather than contrasting.

There are two options for finishing the grout. Using a sponge will leave a rough finish as you sponge over the top of the joint. However, we recommend using a small trowel to create a shadow line along the edge of the paving stone and slightly peak the grout joint. This method smooths the grout joint and highlights the paving stone.



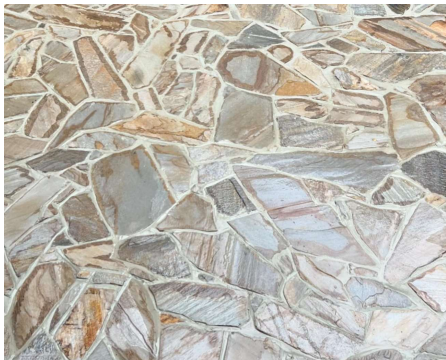
jay@

0438 445 933

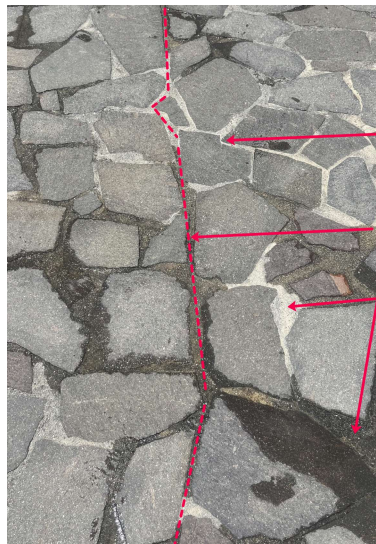


Things to look out for in a crazy paving job

GOOD	POOR
✓ Organic grout lines	X Grinder cut edges
✓ Grout joints flowing and varying from 8-15mm	X Grout lines too tight or getting bigger than 20mm
✓ Small holes filled with stone	X holes filled with mortar
✓ Consistently creating intersections where stone meets	X Long joints exceeding 1 to 2 meters in length with no interruption.
✓ Stones side by side shape together.	X Stones don't naturally shape together creating ugly joins going from narrow to wide.
✓ During install pieces are filled into 'holes' as they go.	X Poor install when lots of 'holes' are left at the end of the day/week.
✓ Paving falls into desired points with no puddling.	X Lots of puddles when it rains with little or no fall.
✓ Grouting matches the stone type and is finished level or pointed up depending on style.	X Grout is discoloured and lots of dips and gauged grout.
✓ Paving is left clean and ready for sealing if required.	X Cement and grout stains left on paving.



Example of well laid crazy paving. Joints are even with no long running uninterrupted lines and no large mortar filled holes.



Paver doesn't shape together.

Long uninterrupted grout join.

Large grout joints and mortar filled spaces.

What to look for when hiring your crazy paving installer

1. Experience and Expertise

- **Importance:** Ensure the contractor has significant experience specifically in crazy paving.
- **Warning Signs:** Lack of a portfolio or limited experience in this specific type of paving.

2. References and Reviews

- **Importance:** Check references and online reviews to gauge past client satisfaction.
- **Warning Signs:** Negative reviews, no references available, or reluctance to provide client testimonials.

3. Licensing and Insurance

- **Importance:** Verify that the contractor is licensed and insured to protect yourself from liability.
- **Warning Signs:** Inability to provide proof of licensing or insurance.

4. Quality of Materials

- **Importance:** Ensure that high-quality, durable materials are used.
- **Warning Signs:** Use of low-cost, inferior materials which may not last long or look good.

5. Detailed Quote

- **Importance:** Obtain a detailed, written quote that includes all costs and scope of work.
- **Warning Signs:** Vague quotes or refusal to provide a written estimate.

6. Contract Specifics

- **Importance:** Have a clear contract outlining the project timeline, payment schedule, and specific details of the work.
- **Warning Signs:** Hesitation to sign a contract or lack of detailed terms.

7. Portfolio of Past Work

- **Importance:** Review a portfolio of previous crazy paving projects to assess the contractor's craftsmanship.
- **Warning Signs:** No portfolio or only generic paving work showcased.

8. Communication and Professionalism

- **Importance:** Good communication and professionalism are essential for a smooth project.
- **Warning Signs:** Poor communication, unprofessional behavior, or failure to answer questions satisfactorily.

9. Warranty and Aftercare

- **Importance:** Ensure that the contractor offers a warranty on their workmanship and materials.
- **Warning Signs:** No warranty or unclear terms about aftercare and maintenance.

10. Permits and Regulations

- **Importance:** The contractor should be knowledgeable about local permits and regulations.
- **Warning Signs:** Lack of awareness or failure to secure necessary permits.

jay@corepave.com.au

0438 445 933

